

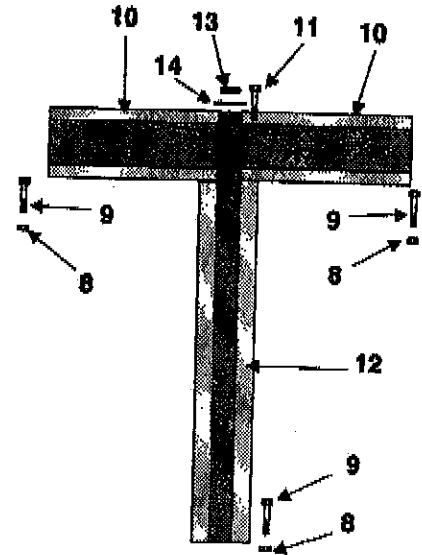
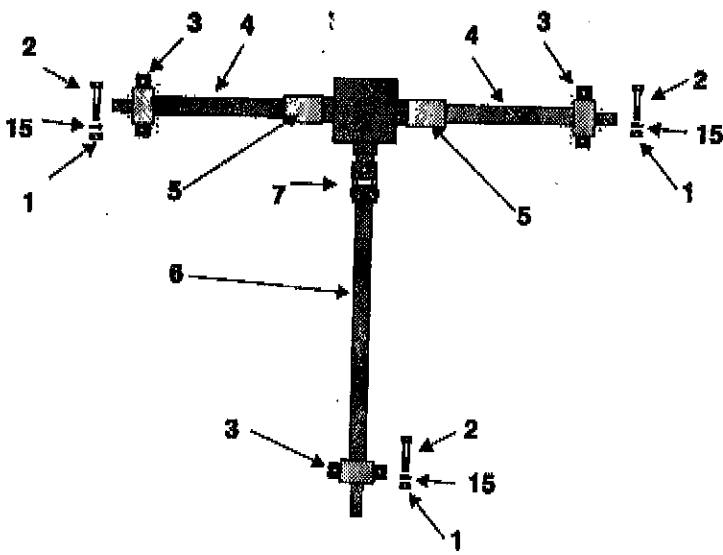
*764*  
*OLD*

# **22' & 26'** **SUPER FLEX FRAME** **OPERATOR'S MANUAL**

*090-110*

**FOR DECK INFORMATION  
REFER TO 090 / 110 COMMERCIAL  
MOWER DECK MANUAL WHICH IS  
PART 2 OF THIS 2 MANUAL SET**

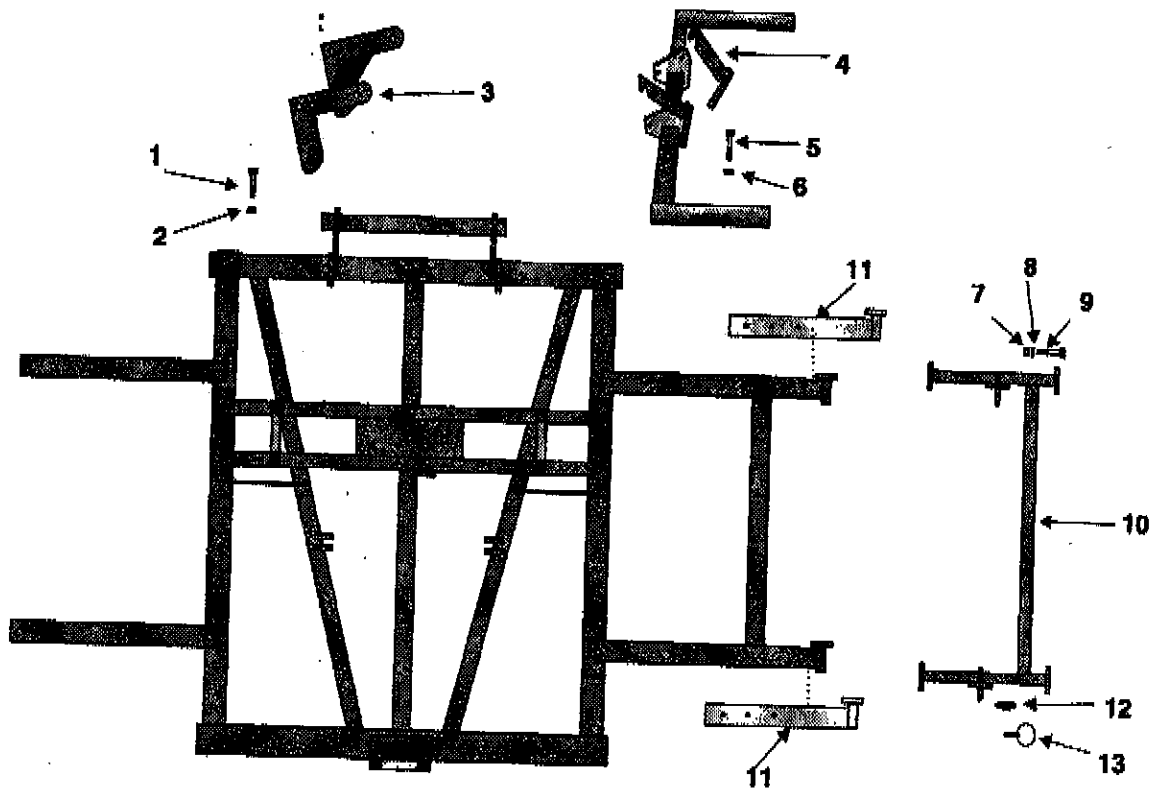
**Super Flex  
Drive Group**



**Super Flex  
Drive Group**

ITEM #	PART #	DESCRIPTION	QTY.
1	000 1019	NUT M14 HEX	6
2	003 2362	BOLT M14 X 55	6
3	502 094B	PILLOW BLOCK BEARING	3
4	502 189B	JACK SHAFT (SIDE)	2
5	502 118B	SHAFT COUPLING	2
6	502 089B	JACK SHAFT (FRONT)	1
7	502 190B	DOUBLE YOKE ASSY.	1
8	001 4106	NUT M10 NYLOCK	3
9	000 1278	BOLT M10 X 30	3
10	502 891B	SHIELDING	2
11	003 3176	BOLT M10 X 35	4
12	502 892B	SHIELDING	1
13	000 1280	LOCK WASHER M10	4
14	000 2034	FLAT WASHER M10	7
15	000 1020	LOCK WASHER M14	6

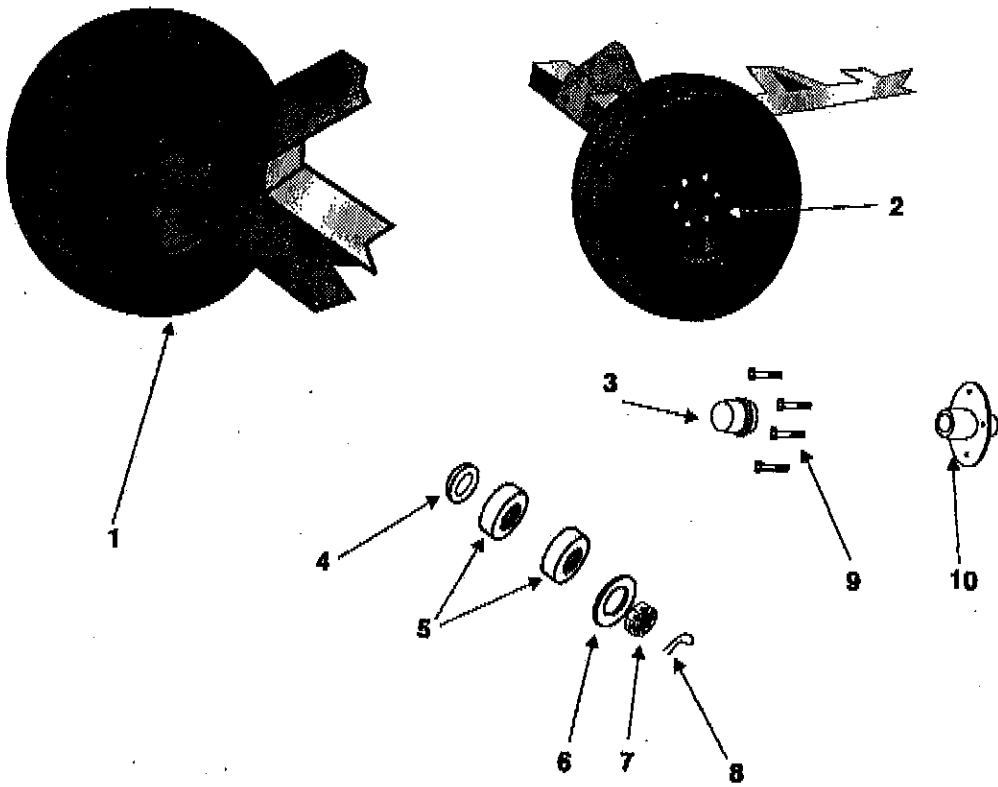
**Super Flex  
Top View - Center Frame**



**Super Flex  
Top View - Center Frame**

ITEM #	PART #	DESCRIPTION	QTY.
1	003 3218	BOLT M16 X 55	2
2	000 5581	NUT M16 STOVER	2
3	502 893B	REAR MOWER BRACKET	1
4	502 894B	REAR MOWER TRANSPORT HOOK	1
5	000 2365	BOLT M16 X 50	2
6	000 3124	NUT M16 NYLOCK	2
7	000 5581	NUT M16 STOVER	16
8	000 8568	FLAT WASHER M16	16
9	000 2365	BOLT M16 X 50	16
10	502 895B	DRAWBAR ASSY. RIGHT 322	1
	502 896B	DRAWBAR ASSY. LEFT 322	1
	502 897B	DRAWBAR ASSY. RIGHT 326	1
	502 898B	DRAWBAR ASSY. LEFT 326	1
11	502 899B	LIFT ARM RIGHT	2
	502 900B	LIFT ARM LEFT	2
12	502 156B	WASHER	4
13	502 157B	LYNCH PIN	4

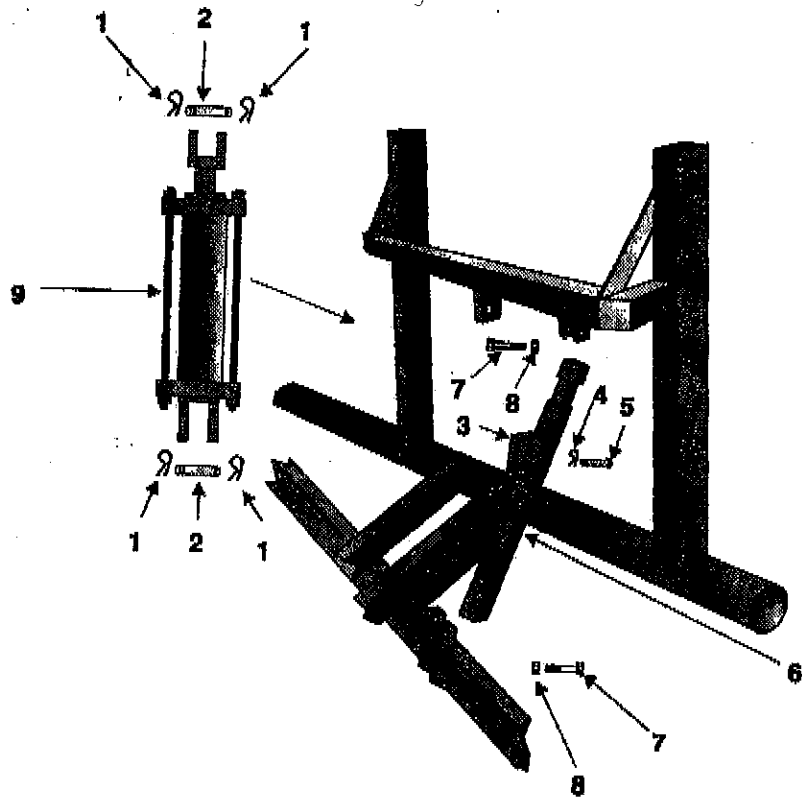
**Super Flex  
Axle / Wheel Group**



**Super Flex  
Axle / Wheel Group**

ITEM #	PART #	DESCRIPTION	QTY.
1	502 901B	TIRE 11L - 14 SL	2
2	502 874B	RIM	2
3	502 902B	GREASE CAP	2
4	502 903B	SEAL	2
5	502 904B	BEARING	4
6	502 905B	WASHER	2
7	502 906B	SPINDLE NUT	2
8	502 907B	COTTER PIN	2
9	502 908B	LUG BOLT	12
10	502 909B	HUB	2
	503 226B	TIRE & RIM COMPLETE	2

**Super Flex  
Hydraulic Cylinder**

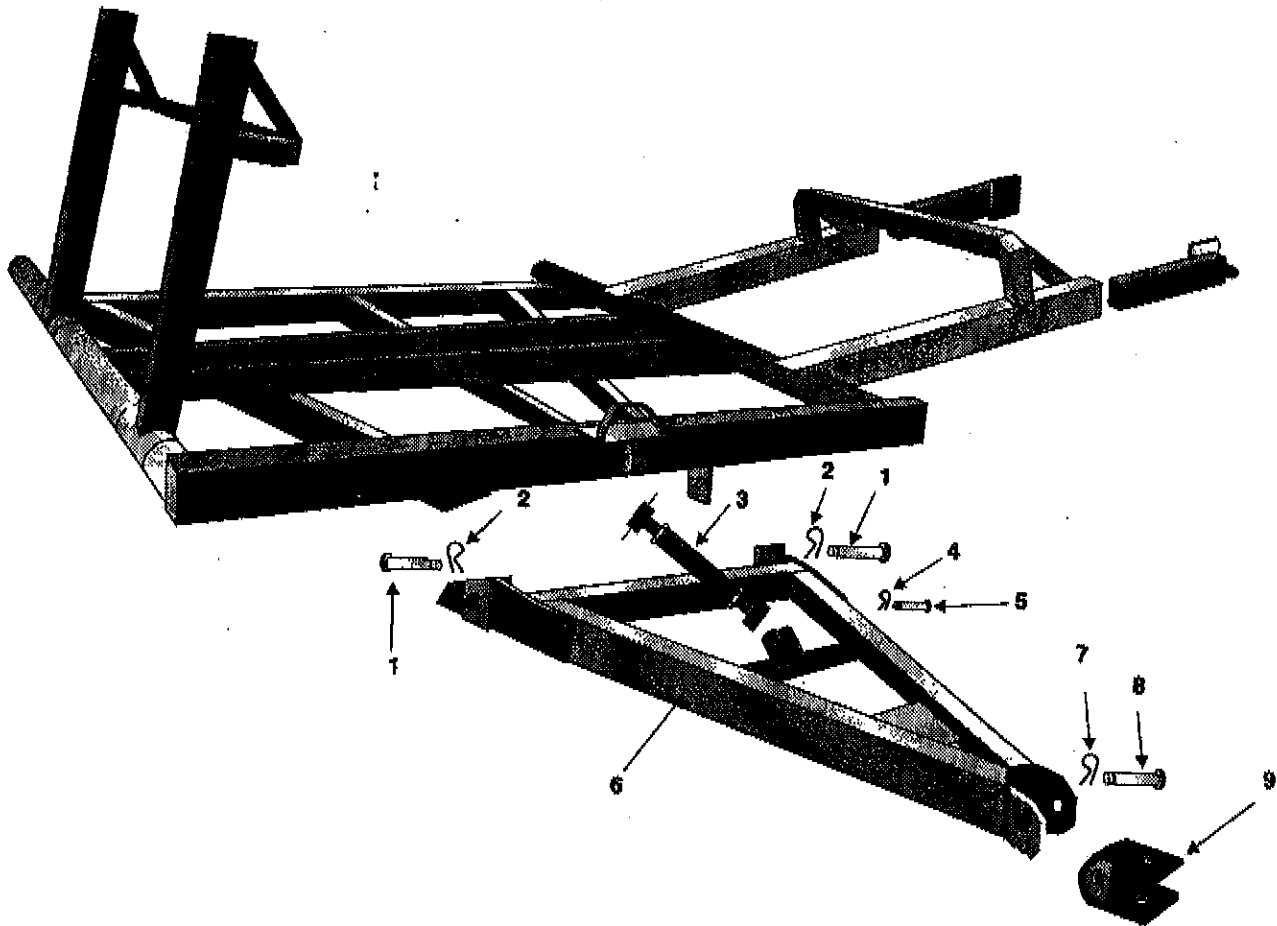




**Super Flex  
Hydraulic Cylinder**

ITEM #	PART #	DESCRIPTION	QTY.
1	502 172B	R CLIP	8
2	502 171B	CONNECTING PIN	4
3	502 910B	CYLINDER BLOCK	2
4	001 5240	R CLIP	2
5	502 149B	TRANSPORT PIN	2
6	502 911B	TRANSPORT TUBE	2
7	001 5122	BOLT M12 X 90	4
8	003 0084	NUT M12	4
9	502 912B	HYDRAULIC CYLINDER	3

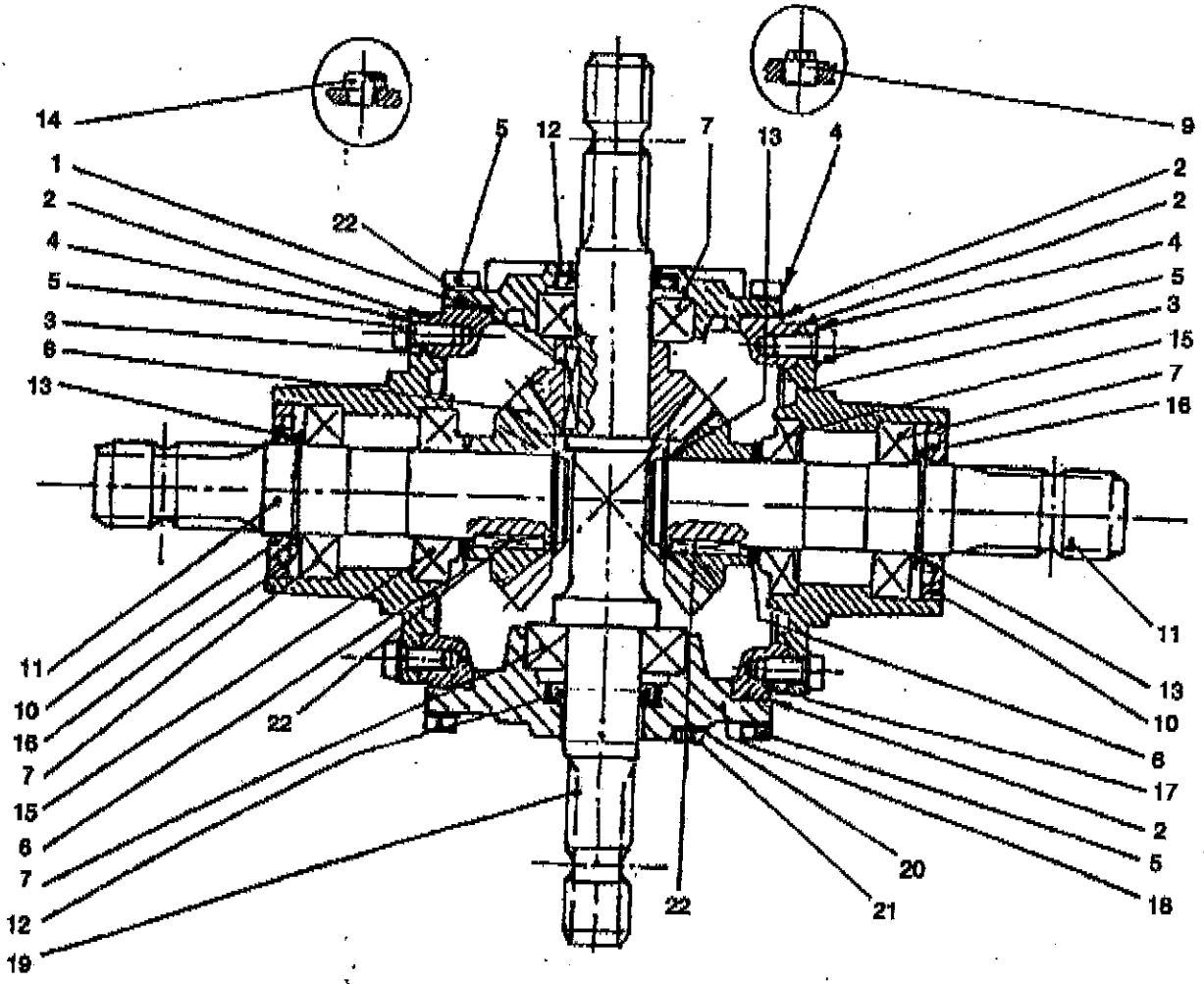
# Super Flex Frame Group



**Super Flex  
Frame Group**

ITEM #	PART #	DESCRIPTION	QTY.
1	502 913B	PIN	2
2	502 914B	R CLIP	2
3	502 915B	TURNBUCKLE	1
4	502 916B	R CLIP	2
5	502 917B	PIN	2
6	502 918B	FRAME TONGUE	1
7	502 919B	R CLIP	1
8	502 920B	PIN	1
9	502 921B	HITCH BRACKET	1

# Super Flex Gearbox



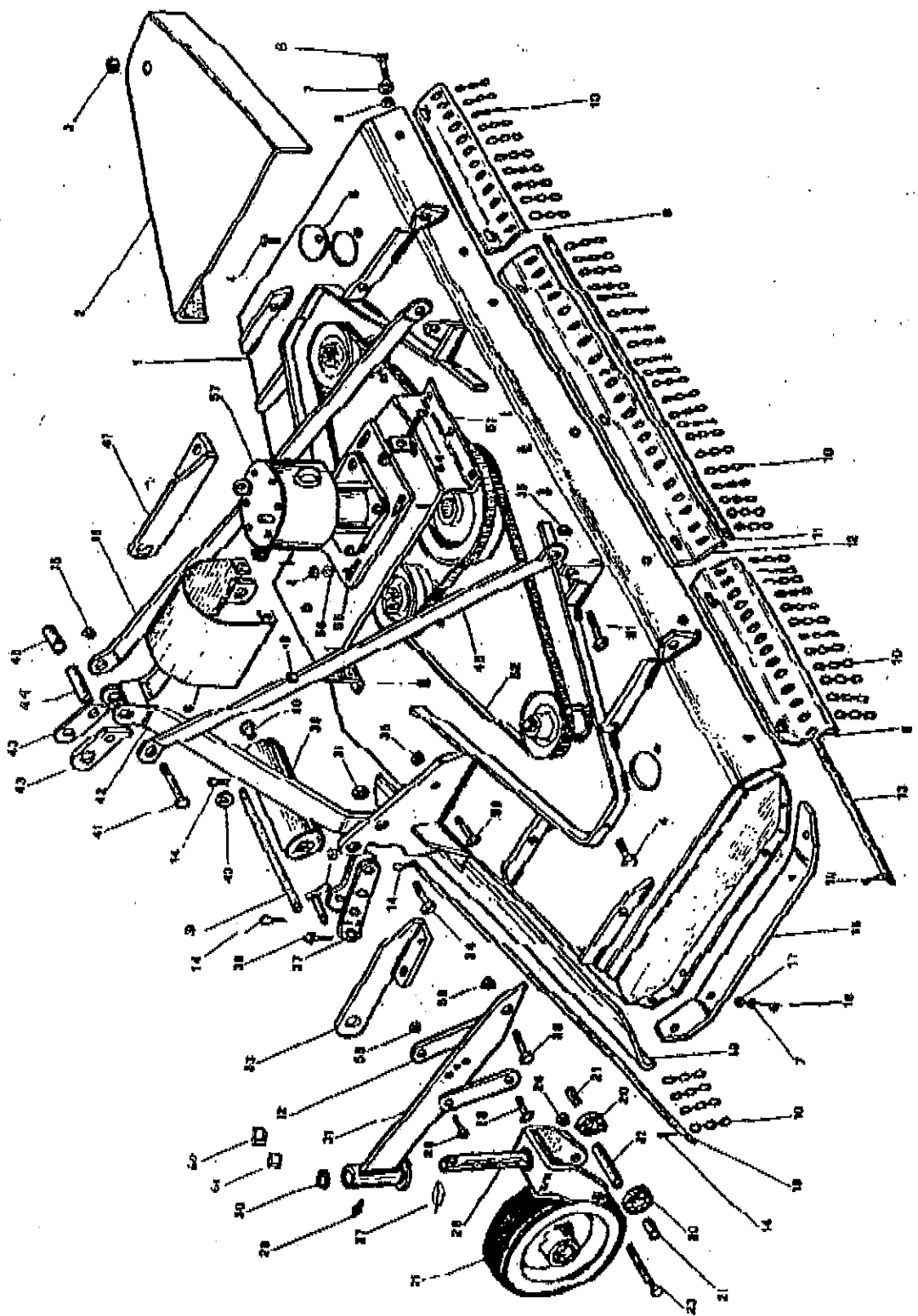
**Super Flex  
Gearbox**

ITEM #	PART #	DESCRIPTION	QTY.
1	502 066B	COVER	1
2	502 067B	GASKET	4
3	502 068B	EXTENSION	2
4	502 069B	LOCK WASHER	24
5	502 070B	BOLT M10 X 30	24
6	502 058B	SHIM	2
7	002 5332	BEARING 6207	4
8	502 071B	GEAR Z 14	3
9	502 063B	PLUG 3/8"	1
10	003 0211	OIL SEAL 35 X 72 X 10	2
11	502 088B	OUTPUT SHAFT	2
12	502 073B	OIL SEAL 35 X 56 X 8	2
13	502 054B	SNAP RING 35	4
14	502 074B	OIL FILLER PLUG	1
15	000 7172	BEARING 30207	2
16	502 075B	TAG	1
17	502 076B	CASTING	1
18	502 077B	COVER	1
19	502 078B	SHAFT	1
20	502 079B	WASHER	1
21	502 080B	BOLT M8 X 10	1
22	502 081B	PARALLEL KEY 10 X 8 X 35	3
23	502 082B	GEARBOX COMPLETE	1



**CYCLONE 090-110**  
**FRAME AND TRANSMISSION**  
**17 (090, 110) 712**

**GR17**  
**SR3**





**CYCLONE 090-110** **GR17**  
**FRAME AND TRANSMISSION** **SR3**  
**17 (090, 110) 712**

ITEM #	PART #	DESCRIPTION	QTY.
1	004 4002	FRAME COMPLETE (C90)	1
	004 4502	FRAME COMPLETE (C110)	1
2	004 4161	BELT PROTECTION (C90)	2
	004 4571	BELT PROTECTION (C110)	2
3	000 6647	PLUG	3
4	000 3037	BOLT 12 X 25	9
5	004 4091	COVER	3
6	001 3345	LOCK NUT M12	-
7	000 2265	FLAT WASHER M12	-
8	004 4146	BOLT 12 X 25	-
9	004 4144	SIDE PROTECTION REAR (C90)	2
	004 4554	SIDE PROTECTION REAR (C110)	2
10	004 4158	CHAIN	-
11	004 4152	REAR PIVOT RIGHT (C90)	1
	004 4563	REAR PIVOT RIGHT (C110)	1
12	004 4143	CENTRAL PROTECTION REAR (C90)	1
	004 4553	CENTRAL PROTECTION REAR (C110)	1
13	004 4153	REAR PIVOT LEFT (C90)	1
	004 4562	REAR PIVOT LEFT (C110)	1
14	004 4156	COTTER PIN	6
15	014 4021	SKID-RIGHT (C90)	1
	024 4021	SKID-LEFT (C90)	1
	014 4531	SKID-RIGHT (C110)	1
	024 4531	SKID-LEFT (C110)	1
16	004 4023	BOLT 12 X 30	8
17	000 1106	NUT M12	8
18	004 4151	FRONT PIVOT (C90)	2
	004 4561	FRONT PIVOT (C110)	2
19	004 4141	FRONT SHIELD (C90)	2
	004 4551	FRONT SHIELD (C110)	2
20	000 6634	BEARING 6205-Z	8
	502 406B	BEARING (PNEUMATIC TIRE)	8
	502 407B	RETAINER (PNEUMATIC TIRE)	8
21	004 4133	SPACER	4
22	004 4138	SPACER	4
	502 121B	SPACER (PNEUMATIC TIRE)	4
23	004 4135	BOLT 14 X 170	4
	502 122B	BOLT (PNEUMATIC TIRE)	4
24	003 0358	NUT M 14	4
	502 123B	NUT (PNEUMATIC TIRE)	4
25	004 4131	WHEEL	4
	502 120B	WHEEL (PNEUMATIC)	4
26	004 4125	WHEEL YOKE (LONG SHAFT)	4
	004 4117	WHEEL YOKE (PNEUMATIC TIRE)	4



**CYCLONE 090-110**  
**FRAME AND TRANSMISSION**  
 17 (090, 110) 712

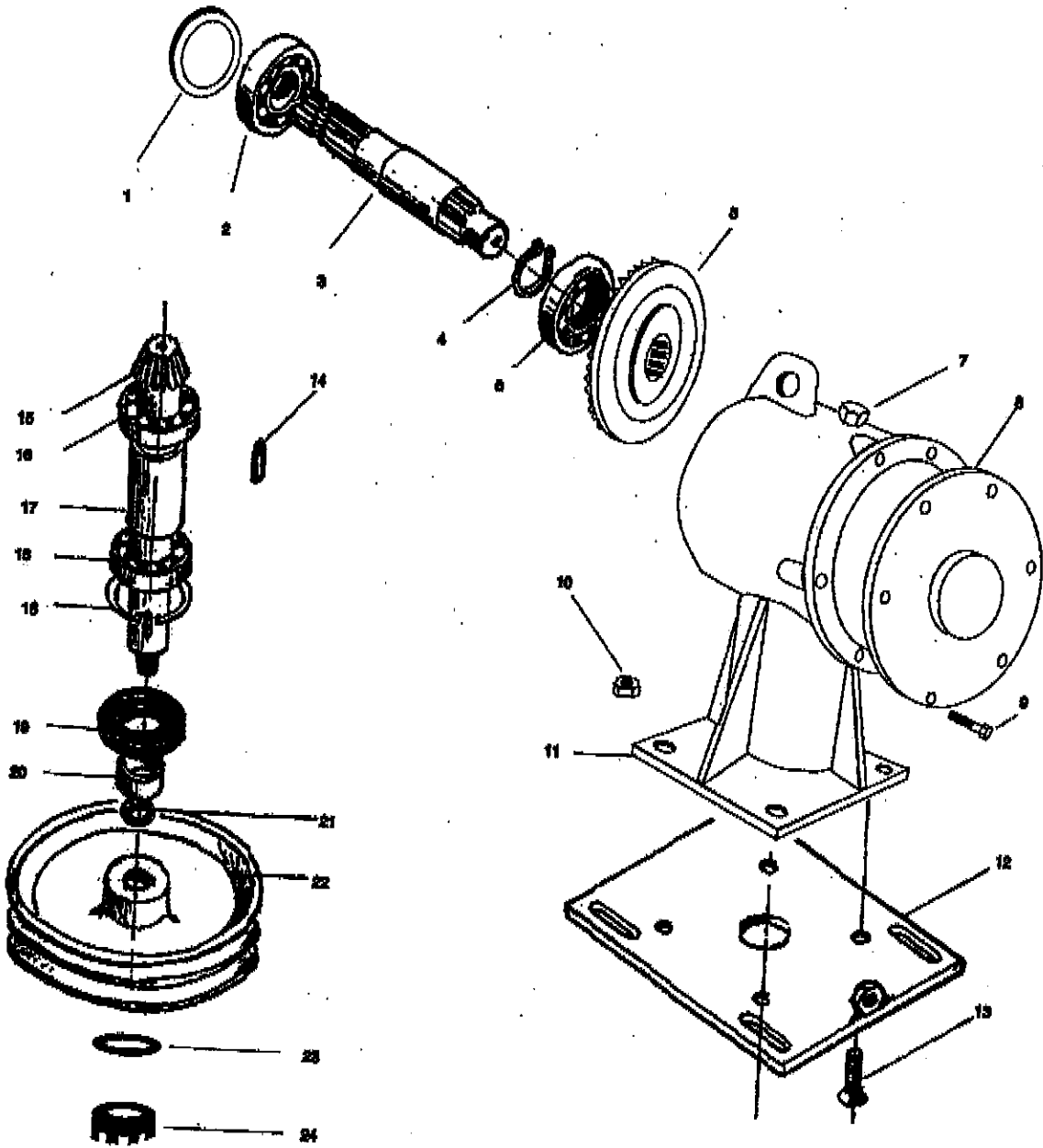
**GR17**  
**SR3**

ITEM #	PART #	DESCRIPTION	QTY.
27	502 542B	LYNCH PIN	4
28	000 6594	BOLT 12 X 45	8
	004 4112	BOLT 12 X 55	4
29	000 1065	GREASE FITTING	4
30	004 4128	SPACER-WASHER	4
31	004 4107	WHEEL ARM	4
32	004 4111	WHEEL REGULATE LEVER	8
33	024 4031	ROLLER SUPPORT-LEFT	1
	044 4031	ROLLER SUPPORT-LEFT	1 (After Ser.# 147000)
34	003 3128	BOLT 16 X 55	2
35	000 5581	NUT M 16	7
36	004 4038	FRONT ROLLER	1
37	004 4073	HITCH BLOCK	2
	501 743B	HITCH BLOCK EXT. PLATE (Opt.)	2
38	001 8266	LYNCH PIN	2
39	004 4039	PIN FOR ROLLER	1
40	000 8568	FLAT WASHER M 16	1
41	000 6891	BOLT 16 X 140	1
42	004 4061	3 POINT HITCH	1
43	004 4069	TOP HITCH PLATE	2
44	004 4067	INNER SPACER	1
45	000 6558	OUTER SPACER	1
46	004 4081	TOP HITCH ARM (C90)	2
	004 4545	TOP HITCH ARM (C110)	2
47	014 4031	ROLLER SUPPORT-RIGHT	1
	034 4031	ROLLER SUPPORT-RIGHT	1 (After Serial # 147000)
48	003 4355	GUARD, PTO	1
49	003 0064	NUT M 12	6
50	000 6578	BOLT 16 X 45	2
51	003 2687	BOLT 16 X 40	2
52	004 4253	BELT C 98 (C90)	2
	004 4595	BELT C 110 (C110)	2
53	004 4171	CENTRAL PLATE (C90)	1
	004 4581	CENTRAL PLATE (C110)	1
54	000 6547	BOLT 12 X 100	1
55	004 4187	GEARBOX FLANGE	1
56	007 6106	FLAT WASHER M 12	4
57	050 0565	GEARBOX COMPLETE	1
58	009 4139	NUT M 12	8
59	004 4078	PIN HITCH	2
60	004 4040	BUSHING	2
61	004 4129	SPACER 1"	4
62	004 4130	SPACER 1/2"	4





GR17  
SR3





**CYCLONE 090-110**  
**GEARBOX**  
 17 (090,110) 712

**GR17**  
**SR3**

ITEM #	PART #	DESCRIPTION	QTY.
1	000 2295	SEAL 35.62.10	1
2	000 7172	BEARING 30207	1
3	000 5556	SHAFT THROUGH DRIVE	1
4	004 2122	SNAP RING	1
5	004 4221	RING GEAR	1
6	004 4217	BEARING 30305	1
7	000 5586	DIPSTICK	1
8	000 6653	GEARBOX COVER	1
9	000 1241	BOLT 10 X 25	6
10	003 0064	NUT M12	4
11	000 6652	GEARBOX HOUSING (NEW STYLE)	1
12	004 4187	FLANGE, GEARBOX	1
13	002 0227	BOLT 12 X 45	4
14	004 4244	KEY 8 X 7 X 40	1
15	004 4222	PINION GEAR	1
16	001 2149	BEARING 6208	2
17	000 6687	SPACER	1
18	000 1154	SNAP RING	1
19	000 1155	SEAL 50.80.10	1
20	004 4245	SPACER	1
21	000 5969	OIL RING	1
22	004 4251	PULLEY C/280-2 (C90)	1
	004 4593	PULLEY C/250-2 (C110)	1
23	006 6039	FLAT WASHER	1
24	003 0095	NUT SELF LOCKING M30	1
	050 0565	GEARBOX COMPLETE	-
	<i>000-6655</i>	<i>GASKET FOR BACK PLATE</i>	

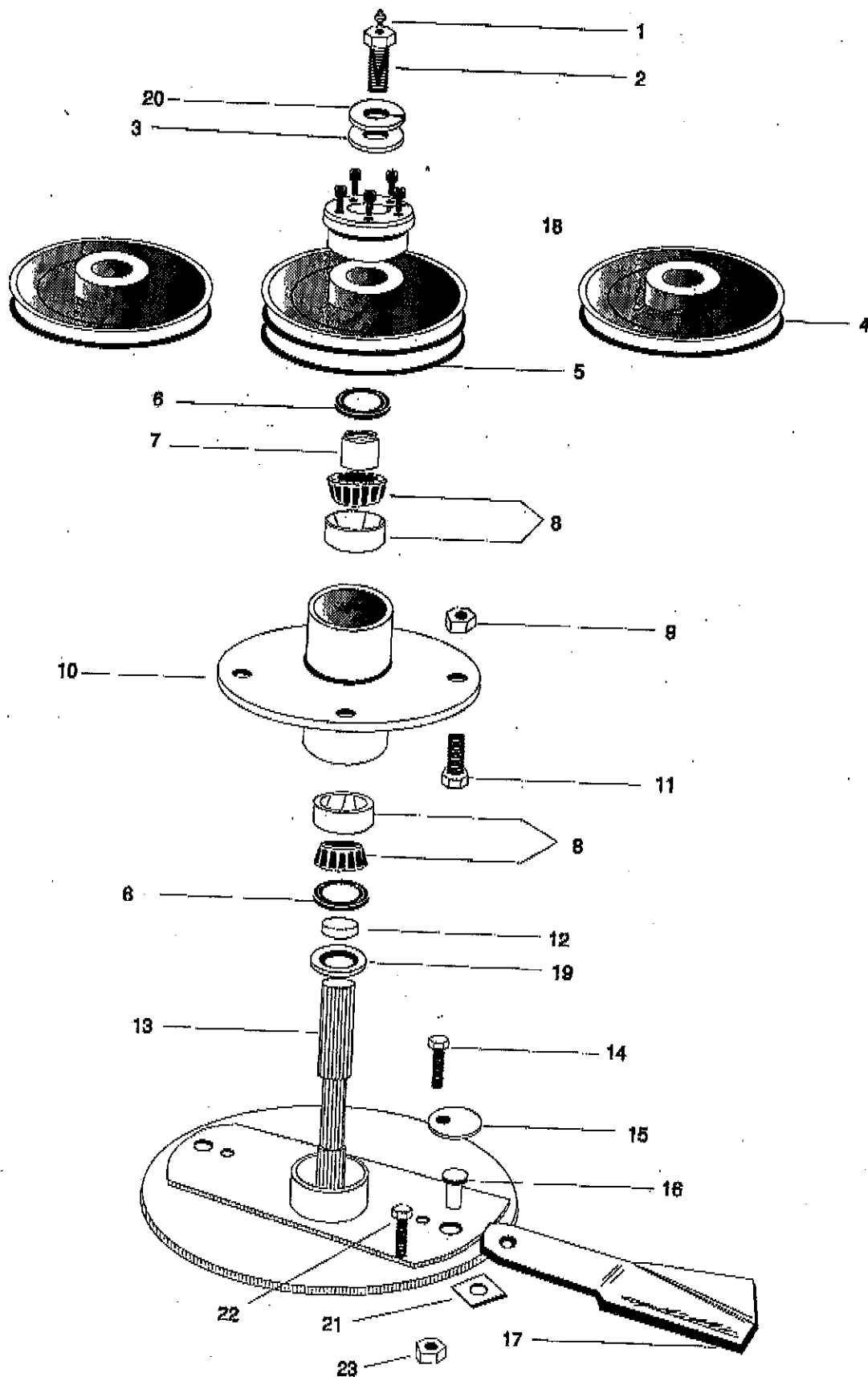
NOTE: FOR MACHINES BEFORE SERIAL NUMBER 143149 USE FOLLOWING PART NUMBERS.

8	004 4225	COVER, GEARBOX	1
11	000 6654	GEARBOX HOUSING	1
	050 0542	GEARBOX COMPLETE	-



**CYCLONE 090-110  
ROTARY AND BLADES  
17 (090,110) 712**

**GR17  
SR3**





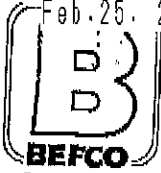
**CYCLONE 090-110  
 ROTARY AND BLADES  
 17 (090,110) 712**

**GR17  
 SR3**

ITEM #	PART #	DESCRIPTION	QTY.
1	000 6635	GREASE FITTING	3
2	004 4274	HOLLOW BOLT	3
3	004 4275	FLAT WASHER M 14	3
4	004 4266	PULLEY C/200-1	2
5	004 4265	PULLEY C/200-2	1
6	000 1059	SEAL-OIL 45.65.10	6
7	004 4277	SPACER	3
8	004 4281	BEARING 32007	6
9	003 0064	NUT M12	12
10	004 4285	SHAFT SUPPORT	3
11	004 6333	BOLT 12 X 45	12
12	004 4283	SPACER	3
13	004 4301	BLADE HOLDER SHAFT	3
14	000 3037	BOLT 12 X 25	6
15	003 0067	WASHER BLOCK	6
16	004 4315	BLADE PIN	6
17	004 4318	BLADE (C90)	6
	004 4598	BLADE (C110)	6
18	005 0117	SPLIT LOCK BUSHING	1
19	006 6039	SPACER	3
20	000 1020	WASHER LOCK	3
21	004 4317	BLADE STOP PLATE	6
22	000 7255	BOLT 12 X 35	6
23	003 0064	NUT M12	6

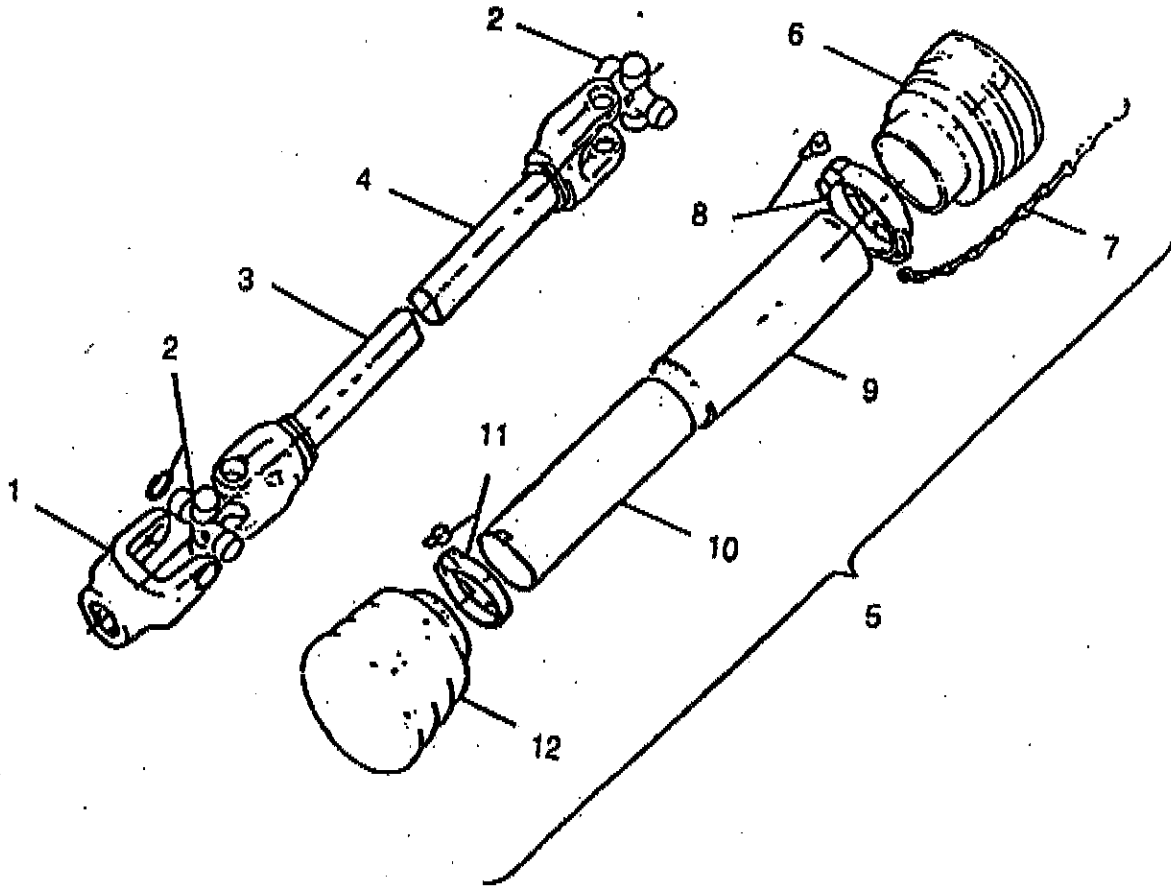
0044290

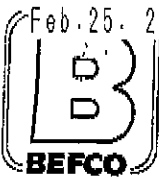
*Spindle Comp.*



**CYCLONE 090-110**  
**PTO SHAFT**  
17 (090,110) 712

**GR17**  
**SR3**





**CYCLONE 090-110**  
**PTO SHAFT**  
**17 (090,110) 712**

**GR17**  
**SR3**

ITEM #	PART #	DESCRIPTION	QTY.
1	024 001E	YOKE TRACTOR END	2
2	014 130E	CROSS & BEARING	2
3	240 931E	INNER TUBE & YOKE 1050	1
4	241 035E	OUTER TUBE & YOKE 1050	1
5	240 255E	SHIELD COMPLETE	1
6	013 016E	GUARD CONE OUTER	1
7	016 025E	SAFETY CHAIN	1
8	013 012E	LOCKING COLLAR OUTER	1
9	141 179E	OUTER SHIELD	1
10	141 275E	INNER SHIELD	1
11	013 011E	LOCKING COLLAR INNER	1
12	013 028E	GUARD CONE INNER	1
	948 137B	PTO COMPLETE	-

SPINDLE ASSEMBLY ADJUSTMENT

The two tapered bearings in each spindle assembly must be adjusted properly. This adjustment is held by sleeve #7 pressed on the shaft under the pulley taper lock bushing.

During normal life, spindle bearings should not require adjustment. Should they become loose, it is recommended the bearings and if necessary, the spindle assembly be replaced.

To properly adjust bearings, follow these procedures:

Press sleeve #7 onto shaft and install pulley with taper lock bushing #18 leaving bolts loose. Place washer #3 over the taper lock and tighten bolt #2 to 30-foot pounds. The tapered bearings are now set and the spindle assembly should be snug, yet turn freely. Secure pulley to shaft by tightening taper lock bushing bolts to 12-foot pounds. Lubricate spindle assembly sufficiently to fill spindle housing, but do not overlubricate.

